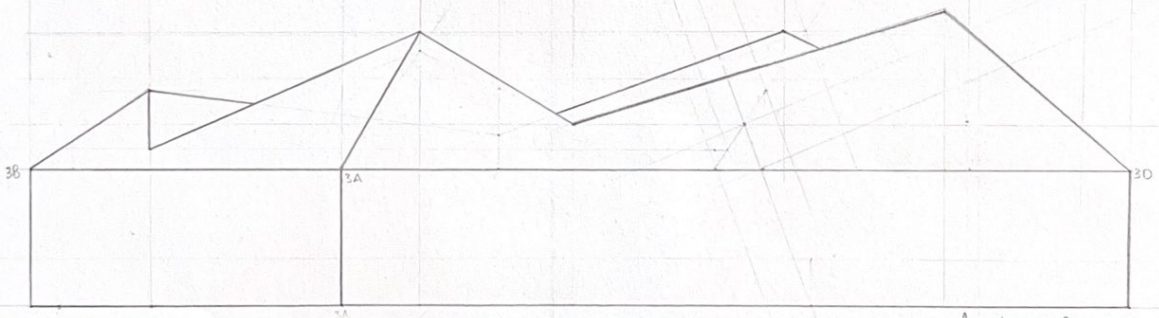
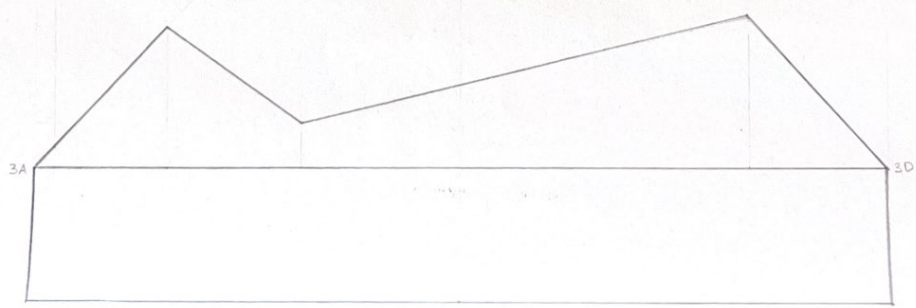


Corte vertical



Alçado obliquo

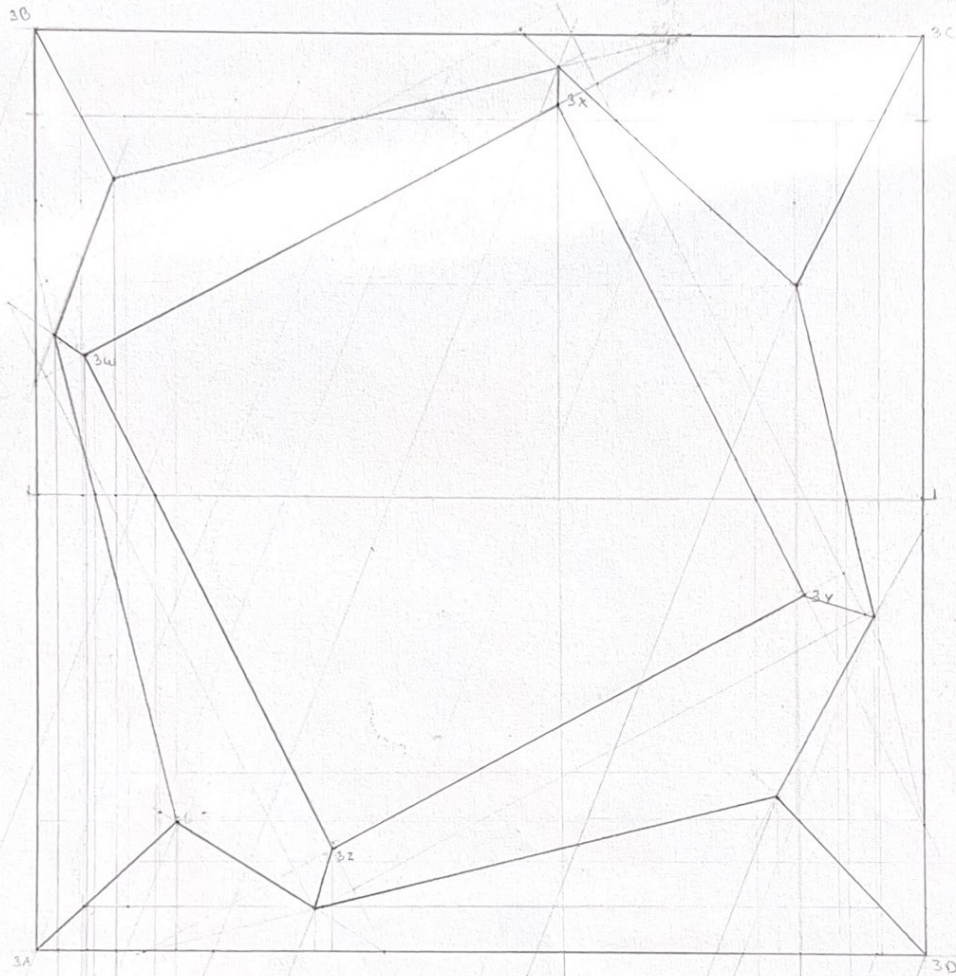


Alçado paralelo ao alinhamento da cobertura

1 unit A. = 1m

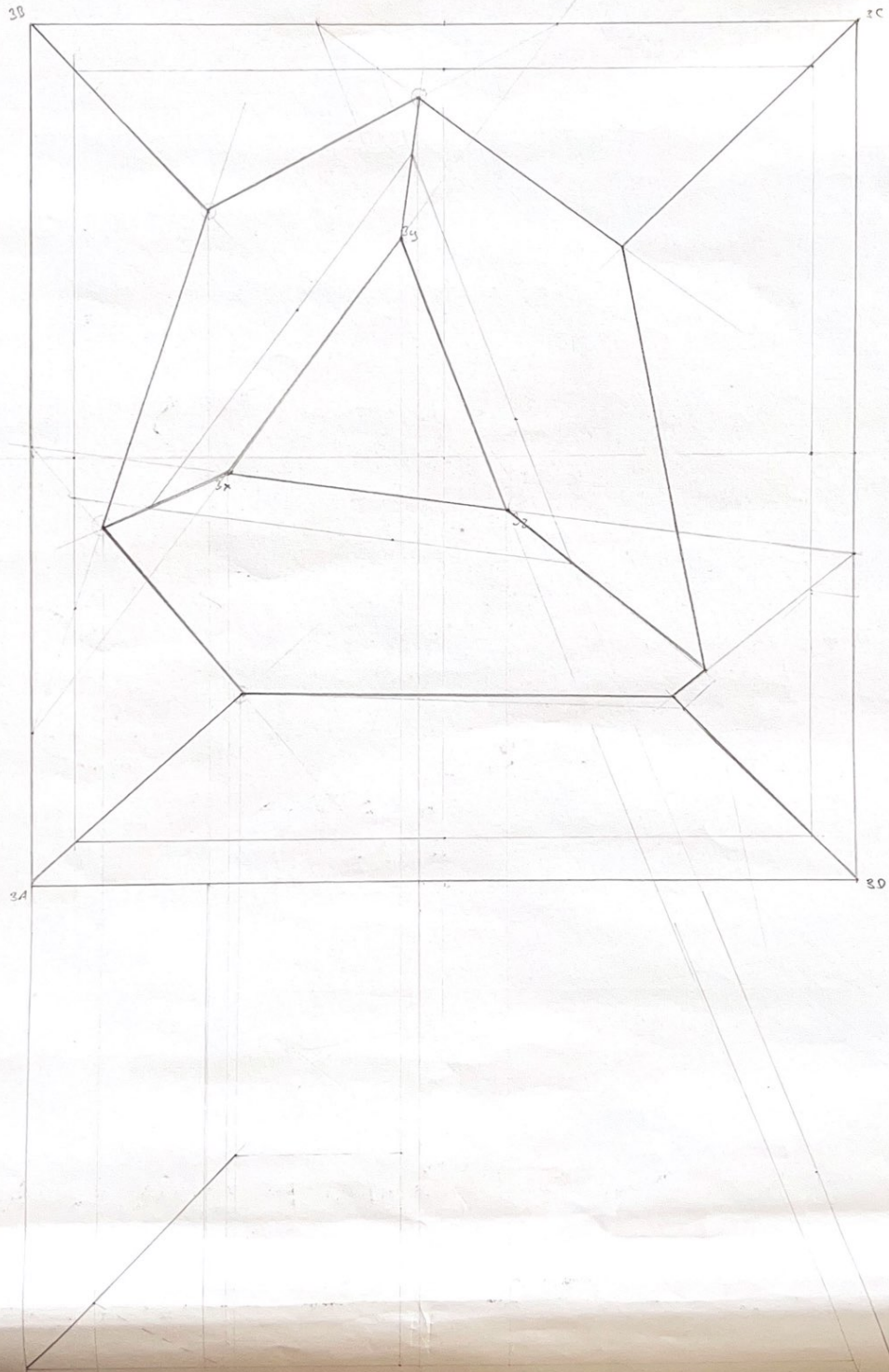
ESC: 1/100

declines: AB - 100%    WX - 30°  
BC - 30°    XY - 45°  
CD - 45°    YZ - 100%  
DA - 1    ZW - 1





Unit: 1 m  
exc: 1/100  
sed: 1/100



Unit A = 1m  
ASC = 1/100  
dec = 100%

